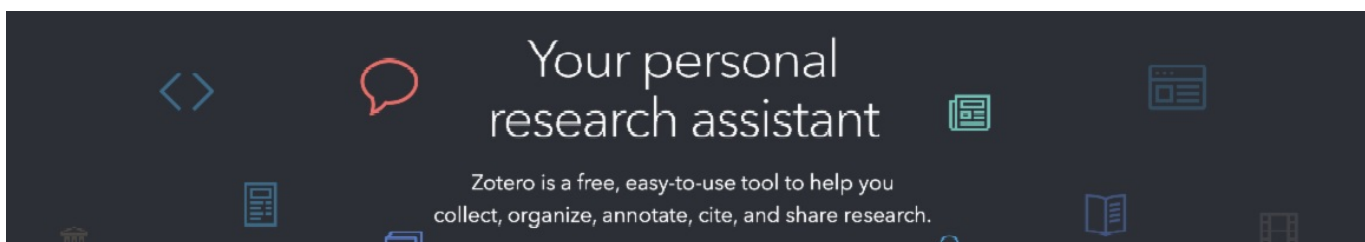




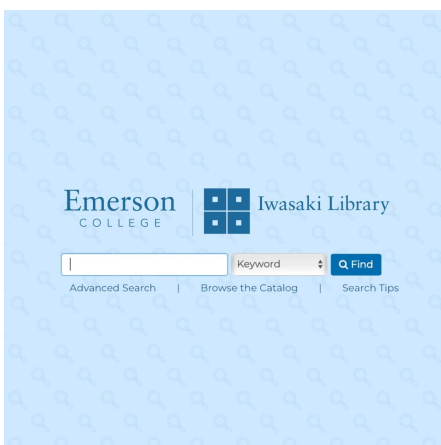
## Iwasaki Library Now Offers Zotero!



Check out our guide on how to synchronize and share your library at the button below!

[About Zotero](#)

## Exciting News!



### Our New Catalog is Live!

Our exciting updates will enhance your Library experience! Explore new browsing options, refine your results, get citations in APA, Chicago, and MLA styles directly from our database.



### Check out the New OAA Site!

The Office of Academic Assessment has redesigned its website! On our homepage you'll now find quick access to resources for faculty and departments, as well as information on upcoming



### Upcoming OAA Reading Group!

Join the Office of Academic Assessment's faculty reading group, "Amplify Learning: Centering Student Voice in Assessment," to explore student-centered assessment practices. Discover how to

Easily find course materials quickly by sorting them by course name, department, or instructor.

Need help with updating your links? Our FAQ page has you covered—access it at the button below. We'd love to hear your thoughts on these new features, so please share your feedback here! Happy browsing!

[FAQ Page](#)

[Browse the Catalog](#)

[Search Course Reserves](#)

[Leave us Your Feedback!](#)

events, assessment in the news, and details on initiatives such as the Learning, Equity, and Assessment Program (LEAP) and Canvas Outcomes.

[Visit the OAA Website](#)

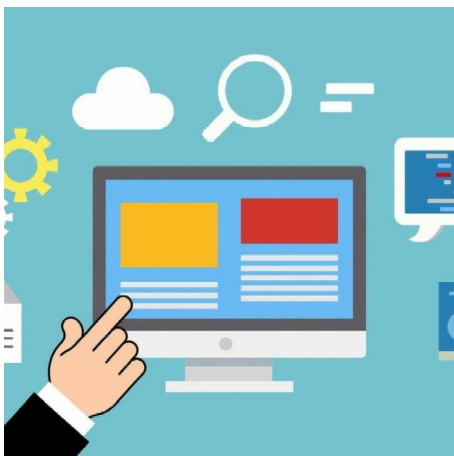
incorporate student input into measuring learning and designing assignments, and discuss the impact of student voice on inclusivity and equity. This group is for faculty committed to enhancing inclusive, student-centered learning environments.

Meetings will be held on Fridays from 12-1:30pm ET via Zoom, with 1 hour for discussion and an optional 30-minute overflow for Q&A. Dates: September 20, October 4, October 18, and November 1. Register by Monday, September 16 at the button below!

[Register Here by 9/16](#)

[Reading Group Description](#)

## Helpful Resources Handpicked Just for You

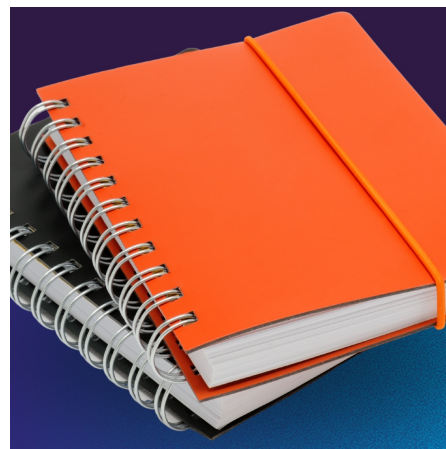


### ITG Updates!

- Wednesday 9/11, 1 - 2 pm ET - Advanced Panopto
- New Features Coming to Canvas Discussions
- Learning Curves in New Discussions

[What's New with ITG](#)

[Learning Curves in New Discussions](#)



### Faculty Academic Year Guide

Start the new academic year on the right foot with Kevin Gannon's insightful guide for faculty navigating yet another "unprecedented" year in higher education. From fostering resilience to adapting teaching practices, Gannon offers practical strategies to help you thrive amidst the ongoing challenges.

Whether you're bracing for shifts in the

[Register for Panopto Workshop on 9/11](#)

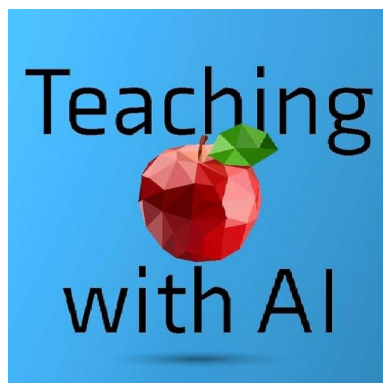
[New Features Coming to Canvas Discussions](#)

educational landscape or seeking to maintain balance, this guide provides the tools you need to not just survive, but succeed. Don't miss these valuable tips for a successful semester!

For more details, check out the full article at the button below on The Chronicle of Higher Education.

[Review Guide](#)

## Implementing AI in the Classroom



**"Teaching with AI: A Practical Guide to a New Era of Human Learning" by José Antonio Bowen, C. Edward Watson**

Interested in learning about implementing AI in the classroom? Click the button below to gain access.

[View E-Book](#)

## Our Newsletters Are Now Available on Digital Commons!



[View Previous Issues on DC](#)

### Thanks for Reading!

Questions? Please contact: [reference@emerson.edu](mailto:reference@emerson.edu) and we will direct your inquiries.

Emerson College Library | 120 Boylston Street | Boston, MA 02116 US

[Unsubscribe](#) | [Update Profile](#) | [Constant Contact Data Notice](#)



Try email marketing for free today!

---